

# Effects of Exercise Training on Older Patients With Major Depression

James A. Blumenthal, PhD; Michael A. Babyak, PhD; Kathleen A. Moore, PhD; W. Edward Craighead, PhD; Steve Herman, PhD; Parinda Khatri, PhD; Robert Waugh, MD; Melissa A. Napolitano, MA; Leslie M. Forman, MD; Mark Appelbaum, PhD; P. Murali Doraiswamy, MD; K. Ranga Krishnan, MD

**Background:** Previous observational and interventional studies have suggested that regular physical exercise may be associated with reduced symptoms of depression. However, the extent to which exercise training may reduce depressive symptoms in older patients with major depressive disorder (MDD) has not been systematically evaluated.

**Objective:** To assess the effectiveness of an aerobic exercise program compared with standard medication (ie, antidepressants) for treatment of MDD in older patients, we conducted a 16-week randomized controlled trial.

**Methods:** One hundred fifty-six men and women with MDD (age,  $\geq 50$  years) were assigned randomly to a program of aerobic exercise, antidepressants (sertraline hydrochloride), or combined exercise and medication. Subjects underwent comprehensive evaluations of depression, including the presence and severity of MDD using *Diagnostic and Statistical Manual of Mental Disorders, Fourth Edition* criteria and Hamilton Rating Scale for Depression (HAM-D) and Beck Depression Inventory (BDI) scores before and after treatment. Secondary out-

come measures included aerobic capacity, life satisfaction, self-esteem, anxiety, and dysfunctional cognitions.

**Results:** After 16 weeks of treatment, the groups did not differ statistically on HAM-D or BDI scores ( $P = .67$ ); adjustment for baseline levels of depression yielded an essentially identical result. Growth curve models revealed that all groups exhibited statistically and clinically significant reductions on HAM-D and BDI scores. However, patients receiving medication alone exhibited the fastest initial response; among patients receiving combination therapy, those with less severe depressive symptoms initially showed a more rapid response than those with initially more severe depressive symptoms.

**Conclusions:** An exercise training program may be considered an alternative to antidepressants for treatment of depression in older persons. Although antidepressants may facilitate a more rapid initial therapeutic response than exercise, after 16 weeks of treatment exercise was equally effective in reducing depression among patients with MDD.

*Arch Intern Med.* 1999;159:2349-2356

From the Departments of Psychiatry and Behavioral Sciences (Drs Blumenthal, Babyak, Moore, Herman, Khatri, Forman, Doraiswamy, and Krishnan and Ms Napolitano) and Medicine (Dr Waugh), Duke University Medical Center, Durham, NC; the Department of Psychology, University of Colorado, Boulder (Dr Craighead); and the Department of Psychology, University of California—San Diego (Dr Appelbaum).

**A**GING OF THE population and the increased prevalence of chronic diseases among the elderly are major challenges facing our society and medical community. Depression is a significant cause—and consequence—of disability among older individuals. Estimates of the prevalence of mood disorders in the United States range from approximately 5% to 10% of elderly community dwellers<sup>1,2</sup> to 18% of nursing home residents.<sup>3</sup> Depressive symptoms are associated with the presence of 1 or more chronic diseases<sup>4,5</sup> as well as disability,<sup>2</sup> including days in bed and days away from normal activities.<sup>5</sup> Moreover, major depressive disorder (MDD) has been associated with a 59% increase in mortality risk during a 1-year follow-up.<sup>3</sup>

The most frequently used treatment for major depression is antidepressant medication.<sup>6</sup> Despite the development of new and effective medications for depression, as many as 30% to 35% of patients do not respond to treatment.<sup>7-9</sup> Furthermore, medi-

cations also may induce unwanted side effects that can impair patients' quality of life and reduce compliance.<sup>9</sup> Even among patients who show improvement with short-term antidepressant use, there is a significant risk for relapse within 1 year following treatment termination.<sup>10-12</sup>

The potential use of aerobic exercise as an alternative or complementary treatment for depression has received considerable attention recently.<sup>13</sup> Anecdotal reports, followed by observational and interventional studies of young and middle-aged adults, suggest that aerobic exercise is superior to placebo or to no treatment<sup>14-16</sup> and is better than or equal to other treatments, including psychotherapy<sup>17-19</sup> or occupational therapy,<sup>20</sup> in reducing depressive symptoms. These studies have been plagued by methodological problems, however, including limited sample sizes, lack of randomized designs, uncontrolled concurrent therapies, failure to document exercise training effects, and imprecise diagnosis of depression. To date, only a single study

## SUBJECTS AND METHODS

### SUBJECTS

Subjects were recruited through flyers, media advertisements, and letters sent to local physicians and mental health facilities. Respondents who appeared to meet the study inclusion criteria attended an initial screening interview with a trained clinical psychologist (W.E.C., S.H.) who determined the presence and severity of MDD using relevant parts of the Diagnostic Interview Schedule<sup>34</sup> and the 17-item Hamilton Rating Scale for Depression (HAM-D).<sup>35</sup> Subjects were considered eligible for the study if they met criteria of the *Diagnostic and Statistical Manual for Mental Disorders, Fourth Edition (DSM-IV)*<sup>36</sup> for MDD (depressed mood or loss of interest or pleasure, and at least 4 of the following symptoms: sleep disturbance, weight loss or change in appetite, psychomotor retardation or agitation, feelings of worthlessness or excessive guilt, impaired cognition or concentration, and recurrent thoughts of death) and received a severity score of at least 13 on the HAM-D.

Exclusion criteria included current antidepressant use, use of other medications that would preclude random assignment to drug or exercise treatment (eg, quinidine, metoprolol), current alcohol or substance abuse, medical contraindications to exercise (eg, significant orthopedic problems or cardiopulmonary disease that would prevent regular aerobic exercise), primary psychiatric diagnosis other than MDD (eg, bipolar disorder, psychosis), evidence of acute suicidal risk, psychotherapy initiated within the past year, and ongoing participation in regular aerobic exercise.

### DEPRESSION MEASURES

The HAM-D<sup>35</sup> is a 17-item clinical rating scale that was used to determine study eligibility and treatment outcome. Patients who received a HAM-D score within the range of 13 through 18 were considered to be mildly clinically depressed, whereas patients who obtained a HAM-D score of more than 18 were considered to be moderately to severely depressed. To evaluate interrater reliability, 10 randomly selected interviews were independently rated by 2 clinicians. The intraclass correlation for both raters was 0.96. Every effort was made to ensure that clinical raters were unaware of patients' treatment group assignment after randomization. Patients were instructed not to reveal which treatment they

received at the time of their posttreatment assessments. The clinical psychologists administering the Diagnostic Interview Schedule and HAM-D were not involved in the provision of any of the treatments or in the interim assessments.

The BDI<sup>37</sup> is a 21-item self-report questionnaire consisting of symptoms and attitudes relating to depression, including items such as self-dislike, suicidal ideation, insomnia, and sadness. The items are summed with a range of 0 to 63; higher scores indicate greater depression. The BDI has been shown to be a valid and reliable measure of depression severity.<sup>37</sup> A meta-analysis of the internal consistency of the BDI estimates yielded a mean coefficient  $\alpha$  of .86 for psychiatric patients and a mean correlation of the BDI and the HAM-D of 0.73.<sup>38</sup>

### ADDITIONAL PSYCHOMETRIC MEASURES

The following set of secondary self-report measures was administered before and at the end of the 16-week intervention: (1) State-Trait Anxiety Inventory,<sup>39</sup> consisting of 20 items designed to assess acute anxiety (eg, "I feel anxious"). Agreement with each statement is rated on a 4-point scale, with 1 indicating not at all to 4, very much so. Higher scores indicate higher levels of anxiety. (2) Rosenberg Self-Esteem Scale,<sup>40</sup> a 10-item scale that measures global self-esteem (eg, "I take a positive attitude toward myself"). Agreement with each statement was rated on a 5-point scale, with 4 indicating strongly agree to 0, strongly disagree. The items were summed such that higher numbers indicate higher self-esteem. (3) Life Satisfaction Index,<sup>41</sup> a 20-item index that measures overall life satisfaction (eg, "As I grow older, things seem better than I thought they would be"). Agreement with each statement was rated on a 3-point scale, and the items were summed such that higher numbers indicate greater life satisfaction. (4) Dysfunctional Attitudes Scale,<sup>42</sup> a 40-item self-report questionnaire designed to assess the irrational beliefs and faulty assumptions about reality hypothesized by Beck to determine emotional disturbance (eg, "If I fail at my work, then I am a failure as a person"). Agreement with each statement was rated on a 7-point scale, so that higher scores reflect less presence of dysfunctional beliefs.

### AEROBIC CAPACITY

At baseline and at the conclusion of 4 months of treatment, participants underwent a symptom-limited graded exercise

has examined the effects of exercise as a treatment for depression in a group of 30 older adults.<sup>21</sup> Although patients reported a significant reduction in depressive symptoms measured by the Beck Depression Inventory (BDI) compared with wait-list controls (subjects on a waiting list for treatment who served as controls), the study had important limitations, including a small sample size, imprecise diagnosis of depression, brief (ie, 6-week) treatment period, lack of a standardized exercise regimen, and failure to document exercise training.

Other studies of the effects of exercise training on older, healthy, nondepressed adults suggest a number of potential psychological benefits, including improvements in cognitive function, mood, and sense of well-being.<sup>22-27</sup> A previous study in our laboratory found lower levels of depressive symptoms among older men following 4 months

of exercise training.<sup>28</sup> Other studies of older patients with medical conditions also have shown improvements of psychosocial functioning as a consequence of exercise training.<sup>29-33</sup> Although these studies are suggestive, to our knowledge the therapeutic effects of exercise on clinical depression have not been evaluated systematically.

Our study accomplishes this goal through a comparison of exercise treatment with the current standard intervention—antidepressant medication—in a group of older adults with MDD. We addressed the following specific questions: (1) How do the therapeutic effects of group exercise training compare with those of antidepressant (sertraline hydrochloride [Zoloft]) therapy? (2) Is there added benefit from combining both treatment modalities? (3) Do patients with different severity levels of depressive symptoms respond differentially to the respective treatment ap-

treadmill test under continuous electrocardiographic recording. A modified Balke protocol was used<sup>43</sup> in which workloads were increased at a rate of 1 metabolic equivalent per minute. Expired air was collected by mouthpiece for quantification of minute ventilation, oxygen consumption, and carbon dioxide production (2900 Metabolic Cart; Sensormedics, Yorba Linda, Calif). Samples were collected at 15-second intervals, and peak values were determined from an average obtained during the last 60 seconds. Patients exercised to exhaustion or to other standard clinical end points (eg, significant chest pain, drop in blood pressure, complex premature ventricular contractions, progressive ST segment depression).

#### INTERIM ASSESSMENTS OF DEPRESSION

To assess ongoing treatment response, a trained research assistant (P.K. or M.A.N.) administered the HAM-D and the BDI at weeks 1, 2, 3, 4, 6, 8, and 12.

#### INTERVENTION

On completion of the baseline assessment, each participant was randomly assigned to 1 of the following 3 treatments: exercise, medication, or a combination of both. A stratified randomization procedure was used to ensure that roughly proportionate numbers of mildly and moderately to severely depressed patients were assigned to each treatment condition. Treatment began within 1 week of the diagnostic interview.

##### Exercise

Subjects attended 3 supervised exercise sessions per week for 16 consecutive weeks. Participants were assigned individual training ranges equivalent to 70% to 85% of heart rate reserve<sup>44</sup> calculated from the maximum heart rate achieved during the treadmill test. Each aerobic session began with a 10-minute warm-up exercise period followed by 30 minutes of continuous walking or jogging at an intensity that would maintain heart rate within the assigned training range. The exercise session concluded with 5 minutes of cool-down exercises. Heart rates were monitored via radial pulses and were recorded, along with ratings of perceived exertion, 3 times during each exercise session by a trained exercise physiologist.

##### Medication

Patients received sertraline, a selective serotonin reuptake inhibitor. This medication was selected because of its documented efficacy and favorable side effect profile for the elderly.<sup>45</sup> Medication management was provided by a staff psychiatrist (L.M.F., P.M.D., or K.R.K.) who met with each patient at study onset and weeks 2, 6, 10, 14, and 16. At these meetings, the psychiatrist evaluated treatment response and side effects and titrated dosage accordingly. Treatment was initiated with 50 mg and titrated until a well-tolerated therapeutic dosage was achieved of up to 200 mg. An effort was made to follow standard, "usual care" guidelines for medication management, with the exception that a change to a different antidepressant was not permitted during the course of the study.

##### Combined Exercise and Medication

Patients in this group received concurrently the same medication and exercise regimens described above.

#### STATISTICAL ANALYSIS

The effects of the intervention on end point depression were assessed using a 1-way multivariate analysis of variance, with posttreatment HAM-D and BDI scores serving as the dependent variables. In addition, to maximize power, we conducted separate analyses of covariance (ANCOVA) using each of the posttreatment outcome scores as the dependent variable and the corresponding baseline measure as the covariate. The ANCOVAs also were used to evaluate treatment effects on aerobic fitness and each of the ancillary psychometric measures. In all cases where ANCOVA was used, preliminary analyses were conducted to confirm that the heterogeneity of slopes assumption was not violated. All analyses were conducted using the intent-to-treat principle. If no observation was recorded at the end of treatment, data were carried forward from the last observation to serve as the outcome value.

In addition to baseline and end point assessments, growth curve modeling techniques were used to explore the form of change during the 16 weeks of the treatment protocol. Growth curve analyses were conducted using SAS PROC MIXED.<sup>46</sup> (Technical details of the growth curve models are available from the corresponding author.)

proaches? and (4) How do the treatments compare with respect to the rate of change of depressive symptoms?

## RESULTS

### SAMPLE CHARACTERISTICS

One hundred fifty-six patients (aged 50-77 years) met study criteria and were randomized into the study. The primary reasons for patient exclusion were a failure to meet the criteria for MDD, a HAM-D score of less than 13, or a history of bipolar disorder (**Figure 1**). Of the patients who met final entry criteria, 48 were randomly assigned to the medication condition, 53 to the exercise condition, and 55 to the combined condition. The treatment groups did not differ with respect to age, sex, level

of education, marital status, income, ethnic composition, or history of recurrent depression (**Table 1**).

### ADHERENCE TO TREATMENT

Thirty-two patients (20.5%) dropped out before completing the entire 16-week protocol. Dropout rates did not vary significantly across treatment conditions ( $\chi^2_2 = 0.63; P = .73$ ); 7 patients (14.6%) in the medication condition, 14 (26.4%) in the exercise condition, and 11 (20.0%) in the combined condition did not complete the study. Six patients (2 from each group) dropped out of the study after randomization but before treatment was initiated owing to dissatisfaction with their group assignments, but were included in the data analysis following the intent-to-treat principle. Ten patients dropped out owing to medication adverse effects (eg, agi-

tation, sleep disturbance, and dizziness), including 5 patients in the combination group and 5 in the medication group. Four additional patients dropped out from the combination group because of difficulties attending the exercise classes (1 patient) or dissatisfaction with the exercise program (3 patients). Twelve patients in the exercise group were unable to complete the program because of logistical difficulties in attending the classes (8 patients) or dissatisfaction with the exercise program (4 patients). Of the 32 patients who dropped out of the study, 7 agreed to complete a depression assessment and treadmill test at the time that they dropped out of the study; these data served as their outcome measures. Study dropouts did not differ from patients who completed the study on baseline HAM-D severity ( $P = .22$ ), sex ( $P = .93$ ), marital status ( $P = .42$ ), race ( $P = .66$ ), or age ( $P = .99$ ), although patients who dropped out tended to have higher BDI scores at baseline ( $P = .09$ ). Seven patients (4 in the combination group and 3 in the exercise group) sustained a musculoskeletal injury during their exercise training that necessitated their use of cycle ergometry as their primary mode of aerobic training.

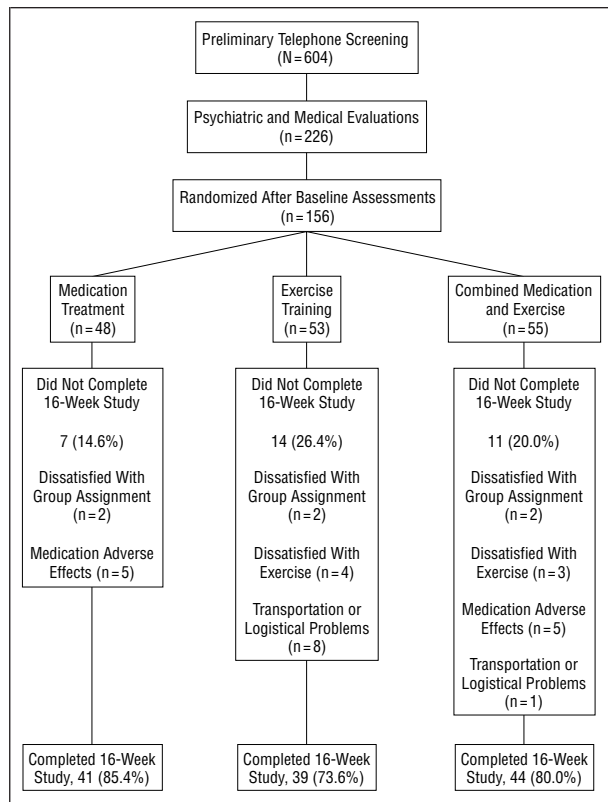


Figure 1. Flowchart of trial.

Adherence to medication treatment was evaluated by pill count; patients appeared to take medications as prescribed (no patient deviated by >5% from the prescribed dosage). The median peak dose of sertraline hydrochloride was 100 mg for the medication and combined treatment groups. Attendance for the 2 exercise conditions was also comparable, with patients in the exercise condition attending a median of 43 sessions (89.6% of scheduled sessions) and patients in the combined condition attending an average of 44 sessions (91.7% of the scheduled sessions). Similarly, the mean percentage of time in target heart rate training range was virtually identical for the exercise (82.4%) and combined (82.4%) groups.

### CHANGES IN AEROBIC CAPACITY

The ANCOVA revealed that the treatment groups differed with respect to improved aerobic capacity ( $F_{2,153} = 5.62$ ;  $P = .004$ ) and treadmill test duration ( $F_{2,153} = 7.68$ ;  $P < .001$ ). Patients in the exercise and combination groups showed significant improvements in aerobic capacity (Figure 2), whereas patients in the medication group did not. Patients in the exercise condition achieved an 11% improvement in aerobic capacity of  $2.7 \pm 2.8$  mL/kg per minute, and patients in the combined condition achieved a 9% improvement in aerobic capacity of  $2.3 \pm 2.2$  mL/kg per minute; patients in the medication condition showed minimal (<3%) improvement. A similar pattern was observed with respect to exercise tolerance, with patients in the exercise group showing a 15% improvement in test duration, those in the combination group showing an 11% improvement, and those in the medication group showing a less than 3% improvement.

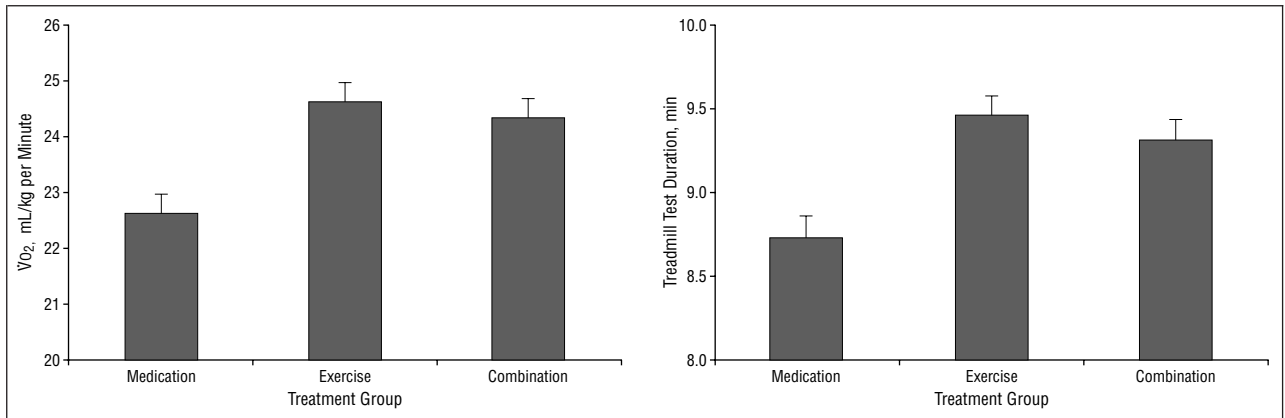
### EFFECTS ON DEPRESSION

All 3 groups exhibited a significant decline in depressive symptoms. Figure 3 displays the mean HAM-D and BDI scores at study entry and at 16 weeks. The treatment groups did not differ significantly on baseline levels of depression as measured by the HAM-D ( $F_{2,153} = 0.96$ ;  $P = .39$ ) or the BDI ( $F_{2,153} = 0.90$ ;  $P = .40$ ). A 1-way multivariate analysis of variance revealed no statistically significant differences among the groups on the HAM-D or the BDI (Wilks  $\lambda_{4,64} = 0.98$ ;  $P = .67$ ). The ANCOVA models controlling for baseline levels of depression also did not yield any significant treatment effects with respect to the HAM-D ( $F_{2,152} = 0.61$ ;  $P = .55$ ) or BDI ( $F_{2,152} = 1.01$ ;  $P = .37$ ).

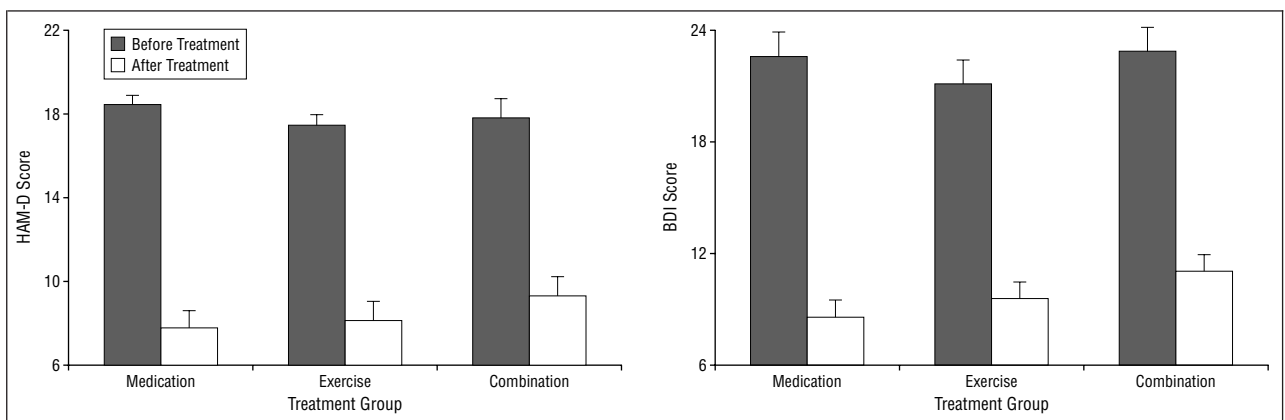
Finally, based on DSM-IV criteria for MDD<sup>36</sup> and assuming that patients who dropped out of the study were still depressed, the percentage of patients who were no longer

Table 1. Patient Characteristics for Treatment Groups

Characteristic	Medication Group (n = 48)	Exercise Group (n = 53)	Combination Group (n = 55)	Total Cohort (N = 156)
Age, mean (SD), y	57 (7.0)	57 (5.8)	57 (6.7)	57 (6.5)
Male, No. (%)	10 (20.8)	14 (26.4)	19 (34.5)	43 (27.6)
Education, mean (SD), y	16 (3.1)	16 (3.0)	16 (2.8)	16 (2.8)
Nonwhite, No. (%)	11 (22.9)	6 (11.3)	2 (3.6)	19 (12.2)
Married, No. (%)	25 (52.1)	25 (47.2)	32 (58.2)	82 (52.5)
History of recurrent depression, No. (%)	43 (89.6)	42 (79.2)	48 (87.3)	133 (85.2)



**Figure 2.** Mean aerobic capacity and exercise tolerance for each treatment group, adjusting for pretreatment levels of depression. Compared with patients in the medication group, those in the exercise and combination groups showed significantly higher aerobic capacity ( $\dot{V}O_2$ ) (left) and longer treadmill test duration (right) after 16 weeks of treatment. Error bars represent SEs.



**Figure 3.** Observed mean depression scores before and after treatment. All changes from pretreatment to posttreatment were statistically significant ( $P < .001$  for all). The treatment groups did not differ on baseline or posttreatment levels of depression. Error bars represent SEs. HAM-D indicates Hamilton Rating Scale for Depression; BDI, Beck Depression Inventory.

classified as clinically depressed at the end of the 4-month treatment period did not differ across treatment groups ( $\chi^2_2 = 0.79$ ;  $P = .67$ ); 32 patients (60.4%) in the exercise group, 33 (68.8%) in the medication group, and 36 (65.5%) in the combination group no longer met DSM-IV criteria for MDD according to the clinician-rater who was unaware of patients' group status. When the additional criteria of a HAM-D score greater than 6 was added to the DSM-IV classification, the groups again did not differ ( $\chi^2_2 = 1.08$ ;  $P = .58$ ), with 25 patients (47.2%) in the exercise group, 27 (56.2%) in the medication group, and 26 (47.3%) in the combination group classified as being no longer clinically depressed.

#### RATE OF TREATMENT RESPONSE

The growth curve analysis for the HAM-D revealed that the rate of treatment response (depression score as a function of time in treatment) differed in a statistically significant manner ( $P = .02$ ) across the treatment groups depending on the initial severity of depression. This relation can be seen best in the fitted growth curves presented in the left panel of **Figure 4**, which shows the shape of the change in depression scores at selected values of high and low initial depression. Depressed patients in the medication group exhibited a more rapid initial therapeutic response (within

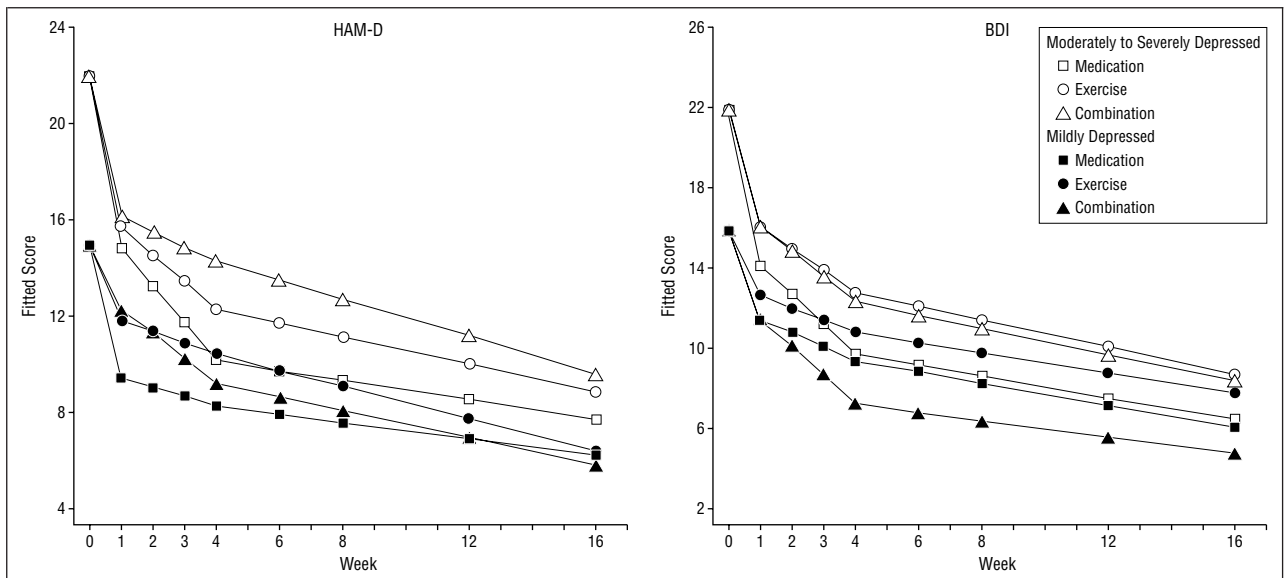
the first few weeks) compared with patients in the other groups. Also, mildly depressed patients appeared to respond more quickly to the combination of medication and exercise than did moderately to severely depressed patients. The trajectory of BDI scores (Figure 4, right) also varied as a function of treatment group and initial severity level of depression such that patients with mild depressive symptoms at baseline who received combination therapy exhibited a more rapid response compared with patients receiving only medication or only exercise. Summaries of the growth curve analyses for the HAM-D and BDI are given in **Table 2** and **Table 3**, respectively.

#### ADDITIONAL PSYCHOLOGICAL VARIABLES

The groups did not differ at baseline on self-reported levels of anxiety, self-esteem, life satisfaction, or dysfunctional attitudes (**Table 4**). At 16 weeks, all groups had improved on each of these measures, but these changes were not significantly different across groups.

#### COMMENT

The results of this study provide empirical support for the notion that a group program of aerobic exercise is a feasible and effective treatment for depression in older



**Figure 4.** Fitted values for Hamilton Rating Scale for Depression (HAM-D) (left) and Beck Depression Inventory (BDI) (right) across 16 weeks of treatment. Values represent the fitted scores in each treatment group for 2 selected values of baseline depression treatment (22 for moderate to severe and 16 for mild). Week 0 values represent the baseline starting points selected for this illustration and were not generated by the model. Depression ratings of mild and moderate to severe are at baseline.

**Table 2. Solution for Growth Curve Model of HAM-D\***

Source	df†	F Statistic	P
Baseline HAM-D	1	18.56	.001
Early weeks	1	0.98	.32
Later weeks	1	1.18	.28
Treatment group	2	2.22	.11
Interactions			
Early weeks × group	2	4.69	.009
Later weeks × group	2	3.89	.02
Baseline HAM-D × early weeks	1	4.48	.04
Baseline HAM-D × later weeks	1	2.99	.08
Baseline HAM-D × group	2	2.73	.07
Baseline HAM-D × early weeks × group	2	4.63	.01
Baseline HAM-D × later weeks × group	2	3.98	.02

\*HAM-D indicates Hamilton Rating Scale for Depression; early weeks, slope from week 1 to week 4; later weeks, slope from week 4 to week 16.  
†Denominator df = 984 for all tests.

**Table 3. Solution for Growth Curve Model of BDI\***

Source	df†	F Statistic	P
Baseline BDI	1	29.72	.001
Early weeks	1	0.02	.89
Later weeks	1	0.00	.99
Treatment group	2	6.24	.002
Interactions			
Early weeks × group	2	4.65	.01
Later weeks × group	2	4.82	.008
Baseline BDI × early weeks	1	6.69	.01
Baseline BDI × later weeks	1	3.55	.06
Baseline BDI × group	2	8.98	.001
Baseline BDI × early weeks × group	2	5.79	.002
Baseline BDI × later weeks × group	2	6.10	.003

\*BDI indicates Beck Depression Inventory; early weeks, slope from week 1 to week 4; later weeks, slope from week 4 to week 16.  
†Denominator df = 984 for all tests.

adults. Most patients were able to complete the exercise training protocol successfully. Dropout rates and adherence data compare favorably with those reported in other studies of exercise in older populations<sup>23,24,26,47</sup> and suggest that the presence of clinical depression does not preclude participation in an exercise program. Moreover, exercising subjects achieved small but clinically and statistically significant improvements in aerobic capacity, which were comparable to changes observed in non-clinical populations of older adults.<sup>28</sup>

Patients also appeared to achieve significant clinical improvement with exercise training. Among the 156 patients who entered the trial, 60.4% of patients in the exercise condition, 68.8% of patients in the medication condition, and 65.5% of patients in the combined condition no longer met DSM-IV criteria for MDD. All 3 groups also showed significant reductions on HAM-D and BDI scores, indicating that their clinical symptoms were significantly

reduced. That exercise was equally effective as medication after 16 weeks of treatment is consistent with findings of other studies of exercise training in younger depressed adults.<sup>14,15,17,18</sup> The magnitude of reductions in depression scores is also comparable to the levels achieved using sertraline in other clinical trials of depression.<sup>45,48</sup> Moreover, the changes in depressive symptoms found for all treatments in our study are consistent with the extent of improvements reported in more than a dozen studies of psychosocial interventions for MDD.<sup>12,49-53</sup> For example, in the National Institute of Mental Health Collaborative Depression Study,<sup>53</sup> 36% of patients undergoing cognitive behavior therapy, 43% of patients undergoing interpersonal therapy, and 42% of patients receiving medication (imipramine hydrochloride) were considered “recovered,” compared with 47.2% undergoing exercise, 56.2% receiving medication (sertraline), and 47.3% receiving a combination of exercise and medication in our study.

**Table 4. Mean Pretreatment and Adjusted Last Observation Scores for Ancillary Psychometric Measures\***

Measure	Treatment Group, Mean (SE) Score			P†
	Medication	Exercise	Combination	
Anxiety				
Pretreatment	51.1 (1.6)	51.9 (1.5)	50.5 (1.6)	.49
Posttreatment	42.1 (1.8)	41.0 (1.7)	39.1 (1.7)	.35
Self-esteem				
Pretreatment	22.4 (1.0)	22.1 (1.0)	22.8 (1.1)	.89
Posttreatment	26.2 (1.1)	25.2 (1.0)	26.3 (1.0)	.73
Life satisfaction				
Pretreatment	15.2 (0.98)	15.4 (1.0)	13.8 (0.98)	.50
Posttreatment	21.4 (1.3)	19.0 (1.2)	21.4 (1.2)	.31
Dysfunctional attitudes‡				
Pretreatment	189.0 (5.3)	183.3 (5.1)	196.1 (4.9)	.24
Posttreatment	205.7 (5.2)	198.0 (4.9)	201.9 (4.8)	.56

\*Pretreatment scores are means from a 1-way analysis of variance. Adjusted posttreatment means are least-squares means from an analysis of covariance model, adjusted for pretreatment levels of outcome measure.

†Determined using probability level for F test comparing the 3 treatment groups.

‡Higher scores indicate improvement.

Although patients in all 3 groups achieved comparable improvement by the end of the 16-week treatment program, the rate of response appeared to vary as a function of depression severity. Those patients who received medication alone appeared to have the fastest response to treatment. Patients with less severe depression appeared to respond more quickly to the combination of exercise and medication than their more severely depressed counterparts.

The mechanisms responsible for the reduction in depressive symptoms are unknown. Several observational studies have shown an association between enhanced physical fitness and improved mental health. For example, in a secondary analysis of 4 surveys, positive affect was related directly to the amount of physical activity in household populations of the United States and Canada.<sup>54</sup> Data from cross-sectional studies of active and sedentary individuals also suggest an association between physical activity and mood. A number of studies have found that exercise-trained patients obtain significantly lower depression scores on self-report measures than sedentary patients.<sup>16,17,21</sup> Data from longitudinal studies, however, have provided mixed results,<sup>15,18,19,55</sup> with no clear evidence that improved aerobic capacity is responsible for reduced depression. Data from our study revealed that, among patients who exercised, a small, statistically significant correlation ( $r = -0.25$ ;  $P = .02$ ) was found between changes in aerobic capacity and changes in HAM-D scores, suggesting that improved aerobic capacity may have accounted for at least part of the reductions in depression. Other biological mechanisms, including alterations in central norepinephrine activity,<sup>56-58</sup> reduced activity of the hypothalamopituitary-adrenocortical axis,<sup>59</sup> and increased secretion of beta endorphins,<sup>60</sup> have been suggested as mechanisms by which exercise improves mood, but no data were available to address these possibilities. Psychological mechanisms also may be responsible for the effects of exercise on mood, including increased feelings of self-efficacy, improved self-concept, and reduced dysfunctional or negative thought patterns. Our study offers no de-

finite conclusions about what psychological processes may mediate the improved mood associated with exercise training.

This was a short-term (16-week) intervention study. The positive changes that were observed among patients treated with exercise also were observed in those receiving medication only. It remains unknown whether differential outcomes might have been obtained with a longer duration of treatment. It also is not clear how resistant the treatment effects will be to relapse over time. Other studies have reported that relapse and long-term recurrence rates for MDD range from 50% to 80%.<sup>10,61-63</sup> Although exercise and antidepressants may be comparable in their short-term effectiveness, there may be important differences in maintenance. Follow-up of these patients is ongoing, and the enduring effects of these interventions will be evaluated subsequently.

Patients also were sufficiently motivated to volunteer for a study of exercise training, tended to be highly educated, and were healthy enough to participate in an exercise program. The extent to which these findings may be generalizable to other older depressed individuals will need to be studied.

Another limitation of our study was the absence of a true no-treatment control group. This prevents us from specifying a "spontaneous recovery" rate against which our treatment results can be compared. After much consideration of this issue during the initial planning of the study, we decided for methodological and ethical reasons to assign patients only to the 3 active treatment groups. Our objective was to compare exercise treatment with an established treatment modality of known effectiveness. The additional value to be gained by including a no-treatment or placebo condition in our study was judged to be minimal compared with the potential negative clinical impact on those study participants assigned to an intervention known to be of lesser effectiveness.<sup>64</sup> It has been estimated that approximately 30% of patients respond to placebo<sup>65</sup>; for example, 21% of patients receiving placebo were considered recovered in the National Institute of Mental Health Treatment of Depression Collaborative Research Program.<sup>53</sup> Thus, patients undergoing exercise training in our study achieved approximately 2-fold greater rates of recovery from MDD compared with patients receiving placebo in previous clinical trials. It is therefore unlikely that the benefits of exercise can be attributed solely to placebo effects or spontaneous remission.

Also, because exercise was performed in a group setting, it is possible that the social interaction of study participants may have had a beneficial effect. Future research on exercise may need to control for the level of social involvement by examining the effects of the exercise setting (eg, home vs program-based) on response to treatment. Based on our results, it appears that exercise is associated with clinically significant improvements in depression that are comparable to those of antidepressants for the clinically depressed older adult when performed in a structured and supervised setting.

Accepted for publication March 16, 1999.

Supported by grants MH49679, HL43028, HL49572, and MO1-RR-30 from the National Institutes of Health,

Bethesda, Md. Pfizer Pharmaceuticals, New York, NY, provided the medications for this study and financial support (Drs Doraswamy, Forman, and Krishnan).

We thank Julie Opitek, PhD, Karen Mallow, MA, and Denise DeBruycker, for their assistance in exercise testing and training, and Mohan Chilukuri, MD, for performing the medical screening examination on study participants. The authors also thank the staff at the Duke Center for Living, Durham, NC, for their support of the study.

Reprints: James A. Blumenthal, PhD, Box 3119, Duke University Medical Center, Durham, NC 27710 (e-mail: blume003@mc.duke.edu).

## REFERENCES

- Weissman MM, Myers JK. Affective disorders in a US urban community. *Arch Gen Psychiatry*. 1978;35:1304-1311.
- Borson S, Barnes RA, Kukull WA, et al. Symptomatic depression in elderly medical outpatients. *J Am Geriatr Soc*. 1986;34:341-347.
- Rovner BW, German PS, Brant LJ, Clark R, Burton L, Folstein MF. Depression and mortality in nursing homes. *JAMA*. 1991;265:993-996.
- Schwab JJ, Traven ND, Warheit GJ. Relationships between physical and mental illness. *Psychosomatics*. 1978;19:458.
- Murrell SA, Himmelfarb S, Wright K. Prevalence of depression and its correlates in older adults. *Am J Epidemiol*. 1983;117:173.
- Depression Guideline Panel. *Depression in Primary Care: Treatment of Major Depression*. Vol 2. Washington, DC: US Dept of Health and Human Services, Public Health Service; 1983. Agency for Health Care Policy and Research publication 93-0551.
- Baldessarini RJ. *Chemotherapy in Psychiatry: Principles and Practice*. Cambridge, Mass: Harvard University Press; 1985:130-234.
- Baldessarini RJ. Current status of antidepressants: clinical pharmacology and therapy. *J Clin Psychiatry*. 1989;50:117-126.
- Silver JM, Yudofsky SC. Psychopharmacology and electroconvulsive therapy. In: Talbot JA, Hales RA, Yudofsky SC, eds. *Textbook of Psychiatry*. Washington, DC: American Psychiatric Press; 1988:767-853.
- Keller MB. Diagnostic issues and clinical course of unipolar illness. In: Francis AJ, Hales RE, eds. *Review of Psychiatry*. Vol 7. Washington, DC: American Psychiatric Press; 1988:188-212.
- Klerman GL. Long-term treatment of affective disorders. In: Lipton MA, DiMascio A, Killam KF, eds. *Psychopharmacology: A Generation of Progress*. New York, NY: Lippincott-Raven Publishers; 1978:1303-1311.
- Craighead WE, Craighead LW, Ilardi SS. Psychosocial treatments for major depressive disorder. In: Nathan PE, Gorman JM, eds. *A Guide to Treatments That Work*. New York, NY: Oxford University Press; 1998:226-239.
- Moore KA, Blumenthal JA. Exercise training as an alternative treatment for depression among older adults. *Altern Ther Health Med*. 1998;4:48-56.
- Dojne EJ, Chambliss DL, Beutler LE. Aerobic exercise as a treatment for depression. *Behav Ther*. 1983;14:434-440.
- Dojne EJ, Ossip-Klein DJ, Bowman ED, et al. Running versus weight lifting in the treatment of depression. *J Consult Clin Psychol*. 1987;55:748-754.
- McCann IL, Holmes DS. Influence of aerobic exercise on depression. *J Pers Soc Psychol*. 1984;46:1142-1147.
- Freemont J, Craighead LW. Aerobic exercise and cognitive therapy in the treatment of dysphoric moods. *Cognit Ther Res*. 1987;2:241-251.
- Greist JH. Exercise intervention with depressed outpatients. In: Morgan WP, Goldston SE, eds. *Exercise and Mental Health*. New York, NY: Hemisphere Publishing Corp; 1987:117-121.
- Klein MH, Greist JH, Gurman NS, et al. A comparative outcome study of group psychotherapy vs exercise treatment for depression. *Int J Ment Health*. 1985;13:148-177.
- Martinsen EW, Medhus A, Sandvik L. Effects of aerobic exercise on depression: a controlled study. *BMJ*. 1985;291:109.
- McNeil JK, LeBlanc AM, Joyner M. The effect of exercise on depressive symptoms in the moderately depressed elderly. *Psychol Aging*. 1991;6:487-488.
- Dustman RE, Ruhling RO, Russell EM, et al. Aerobic exercise training and improved neuropsychological function of older individuals. *Neurobiol Aging*. 1984;5:35-42.
- Emery CF, Gatz M. Psychological and cognitive effects of an exercise program for community-residing older adults. *Gerontology*. 1990;30:184-188.
- Gitlin LN, Lawton MP, Windsor-Landsberg LA, Kleban MH, Sands LP, Posner J. In search of psychological benefits. *J Aging Health*. 1992;4:174-192.
- Long BC. Aerobic conditioning and stress reduction: participation or conditioning? *Hum Movement Sci*. 1983;2:171-186.
- McMurdo MT, Burnett L. Randomized controlled trial of exercise in the elderly. *Gerontology*. 1992;38:292-298.
- Perris S, Templer DI. The effects of an aerobic exercise program on psychological variables in older adults. *Int J Aging Hum Dev*. 1985;20:167-172.
- Blumenthal JA, Emery CF, Madden DJ, et al. Cardiovascular and behavioral effects of aerobic exercise training in healthy older men and women. *J Gerontol*. 1989;44:M147-M157.
- Ettinger WH, Burns R, Messier SP, et al. A randomized trial comparing aerobic exercise and resistance exercise with a health education program in older adults with knee osteoarthritis. *JAMA*. 1997;277:25-31.
- Burckhardt CS, Mannerkorpi K, Hedenberg L, Bjelle A. A randomized, controlled trial of education and physical training for women with fibromyalgia. *J Rheumatol*. 1994;21:714-720.
- McCain GA, Bell DA, Mai FM, Halliday PD. A controlled study of the effects of a supervised cardiovascular fitness training program on the manifestations of primary fibromyalgia. *Arthritis Rheum*. 1988;31:1135-1141.
- Blumenthal JA, Emery CF, Rejeski WJ. The effects of exercise training on psychosocial functioning after myocardial infarction. *J Cardiopulm Rehabil*. 1988;8:183-193.
- Erdman RAM, Duivenvoorden HJ, Verhage F, Kazemier M, Hugenholtz PG. Predictability of beneficial effects in cardiac rehabilitation: a randomized clinical trial of psychosocial variables. *J Cardiopulm Rehabil*. 1986;6:206-213.
- Robins LN, Helzer JE, Croughan J, Ratcliff KS. National Institute of Mental Health diagnostic interview. *Arch Gen Psychiatry*. 1981;38:381-389.
- Hamilton M. A rating scale for depression. *J Neurol Neurosurg Psychiatry*. 1960;23:56-62.
- American Psychiatric Association. *Diagnostic and Statistical Manual of Mental Disorders, Fourth Edition*. Washington, DC: American Psychiatric Association; 1994.
- Beck AT, Ward CH, Mendelsohn M, Mock J, Erbaugh J. An inventory for measuring depression. *Arch Gen Psychiatry*. 1961;4:561-571.
- Beck AT, Steer RA, Garbin MG. Psychometric properties of the Beck Depression Inventory: twenty-five years of evaluation. *Clin Psychol Rev*. 1988;8:77-100.
- Spielberger CE, Gorsuch RL, Lushene RE. *Manual for the State-Trait Anxiety Inventory*. Palo Alto, Calif: Consulting Psychologist Press; 1970.
- Rosenberg M. *Society and the Adolescent Self-image*. Princeton, NJ: Princeton University; 1965.
- Neugarten BL, Havighurst RJ, Tobin SS. The measurement of life satisfaction. *J Gerontol*. 1961;16:141-142.
- Weissman A. The Dysfunctional Attitudes Scale: a validation study. *Dissertation Abstracts Int*. 1979;60:1389B-1390B.
- Blumenthal JA, Rejeski J, Walsh-Riddle M, et al. Comparison of high- and low-intensity exercise training early after acute myocardial infarction. *Am J Cardiol*. 1988;61:26-30.
- Karvonen M, Kentala K, Mustala O. The effects of training heart rate: a longitudinal study. *Ann Med Exp Biol Fenn*. 1957;35:307-315.
- Cohn CK, Shrivastava R, Mendels J, et al. Double-blind, multicenter comparison of sertraline and amitriptyline in elderly depressed patients. *J Clin Psychiatry*. 1990;51:28-33.
- Littell RC, Milliken GA, Stroup WW, Wolfinger RD. *SAS System for Mixed Models*. Cary, NC: SAS Institute Inc; 1996.
- Blumenthal JA, Emery CF, Madden DJ, et al. Long-term effects of exercise on psychological functioning in older men and women. *J Gerontol*. 1991;46:352-361.
- Reimherr FW, Chouinard G, et al. Antidepressant efficacy of sertraline. *J Clin Psychiatry*. 1990;51:18-27.
- Jacobson NS, Hollon SD. Cognitive-behavior therapy versus pharmacotherapy. *J Consult Clin Psychol*. 1996;64:74-80.
- Steuer JL, Mintz J, Hammen CL, et al. Cognitive-behavioral and psychodynamic group psychotherapy in treatment of geriatric depression. *J Consult Clin Psychol*. 1984;52:180-189.
- Thompson LW, Gallagher D. Efficacy of psychotherapy in the treatment of late-life depression. *Adv Behav Res Ther*. 1984;6(theme issue):127-139.
- Thompson LW, Gallagher D, Breckenridge JS. Comparative effectiveness of psychotherapies for depressed elders. *J Consult Clin Psychol*. 1984;55:385-390.
- Elkin I, Shea MT, Watkins JT, et al. National Institute of Mental Health Treatment of Depression Collaborative Research Program: general effectiveness of treatments. *Arch Gen Psychiatry*. 1989;46:971-982.
- Stephens T. Physical activity and mental health in the United States and Canada: evidence from four population surveys. *Prev Med*. 1988;17:35-47.
- Martinsen EW, Hoffart A, Solberg O. Comparing aerobic with nonaerobic forms of exercise in the treatment of clinical depression. *Compr Psychiatry*. 1989;30:324-331.
- Rubin RT. Pharmacocendocrinology of major depression. *Eur Arch Psychiatry Neurol Sci*. 1989;238:259-267.
- Sothman MS, Ismail AH. Relationships between urinary catecholamine metabolites, particularly MHPG, and selected personality and physical fitness characteristics in normal subjects. *Psychosom Med*. 1984;46:523.
- Sothmann MS, Ismail AH. Factor analytic derivation of the MHPG/NM ratio. *Biol Psychiatry*. 1985;20:570-583.
- Galbo H, Kjaer M, Stallknecht B, Mikines KJ, Hansen HP, Dela F. Discussion: hormonal adaptation to physical activity. In: Bouchard G, Shephard RJ, Stephens T, Sutton JR, McPherson BD, eds. *Exercise, Fitness and Health: A Consensus of Current Knowledge*. Champaign, Ill: Human Kinetics Publishers; 1990:259-263.
- Ransford CP. A role for amines in the antidepressant effects of exercise: a review. *Med Sci Sports Exerc*. 1982;14:1-10.
- Shea MT, Elkin I, Imber SD, et al. Course of depressive symptoms over follow-up. *Arch Gen Psychiatry*. 1992;49:782-787.
- Belscher G, Costello CG. Relapse after recovery from unipolar depression. *Psychol Bull*. 1988;104:84-96.
- Keller MB. Chronic and recurrent affective disorders: incidence, course, and influencing factors. In: Kermali D, Racagni G, eds. *Chronic Treatments in Neuropsychiatry*. New York, NY: Lippincott-Raven Publishers; 1985:111-120.
- Nemeroff CB, Schatzberg AF. Pharmacological treatment of unipolar depression. In: Nathan PE, Gorman JM, eds. *A Guide to Treatments That Work*. New York, NY: Oxford University Press; 1998:212-225.
- Davis JM. Antidepressant drug. In: Kaplan HI, Sadock BJ, eds. *Comprehensive Textbook of Psychiatry*. 4th ed. Baltimore, Md: Williams & Wilkins; 1985:765-794.